



Coarse Wavelength Division Multiplexers Module (4 Channels/8 Channels) (CWDM Series)

Rev 10

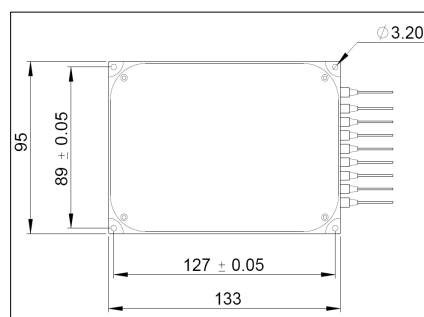
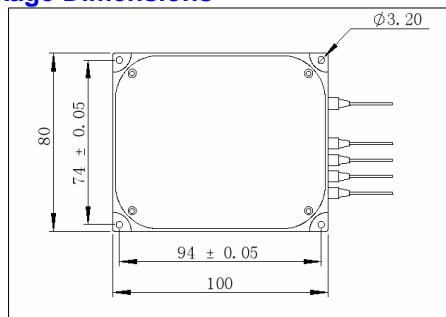
The Coarse WDM Module is expanding the bandwidth of Metro/Access Networks. The 4 channel and 8 channel CWDM modules are based on Coarse Wavelength Division Multiplexer devices. They can act as MUX/DEMUX with 20 nm channel spacing. It has low insertion loss, low PDL, high isolation and good thermal stability.

Specifications

Parameter	Unit	4 Channels	8 Channels
Center Wavelength	nm	1510, 1530, 1550, 1570	1470, 1490, 1510, 1530 1550, 1570, 1590, 1610
Min. 0.5 dB Pass Bandwidth	nm	13	13
Max. Insertion Loss	dB	2.0	3.5
Min. Adjacent Ch. Isolation (Mux)	dB	N/A	N/A
Min. Adjacent Ch. Isolation (Demux)	dB	25	25
Min. Return Loss	dB	50	50
Directivity	dB	55	55
Max. Polarization Dependent Loss	dB	0.1	0.1
Max. Polarization Mode Dispersion	ps	0.2	0.2
Thermal Stability	dB/°C	0.005	0.005
Fiber Type		SMF-28 fiber	SMF-28 fiber
Operating Temperature	°C	-5 to +70	-5 to +70
Storage Temperature	°C	-40 to +85	-40 to +85
Package Dimensions	mm	100 × 80 × 9.5	133 × 95 × 9.5

*IL is 0.3 dB higher, RL is 5 dB lower for each connector added.

Package Dimensions



Ordering Information

CWDMM-①-②-③-④-⑤-⑥

①: Module Type

M - MUX

D - DEMUX

②: Number of Channels

4 - 4 channels

8 - 8 channels

③: Wavelength

1 - 1510 nm, 1530 nm, 1550 nm, 1570 nm

2 - 1470 nm, 1490 nm, 1590 nm, 1610 nm

3 - 1470 nm, 1490 nm, 1510 nm, 1530 nm

4 - 1510 nm, 1530 nm, 1590 nm, 1610 nm

5 - 1470 nm, 1490 nm, 1510 nm, 1530 nm

1550 nm, 1570 nm, 1590 nm, 1610 nm

④: Connector Type

1 - FC/UPC

2 - FC/APC

3 - SC/UPC

4 - SC/APC

N - None

S - Specify

⑤: Fiber Type

B - 250 μm bare fiber

L - 900 μm loose tube

C - 3 mm cable

S - Specify

⑥: Fiber Length

H - 0.5 m