



## Dense Wavelength Division Multiplexers Module (4/8/16 Channels) (DWDMM Series)

Rev 10

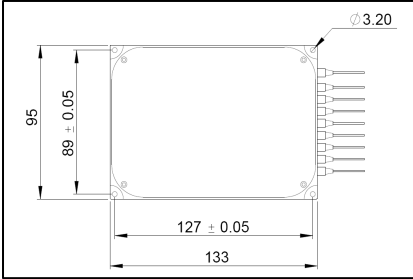
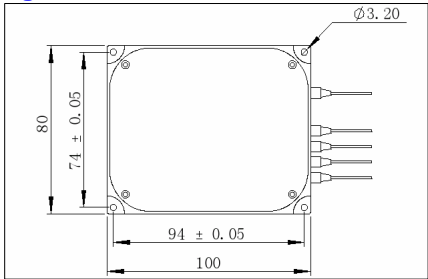
The multi-channel Dense Wavelength Division Multiplexer Module is based on thin film DWDM devices by cascading individual channels into sequence. Channel numbers can be as high as 40 (16) for 100 (200) GHz systems in C band or in L band. They are featured with wide passband, low insertion loss, high channel isolation and high environmental stability. They can be used in dense WDM systems to perform multiplexing or demultiplexing function.

### Specifications

Parameter	Unit	4 Ch	8 Ch	16 Ch	4 Ch	8 Ch	16 Ch
Filter Type	nm		100 GHz			200 GHz	
Pass Bandwidth @ 0.5 dB	nm		0.22			0.5	
Max. Insertion Loss	dB	2.5	3.5	4.8	2.2	3.3	4.6
Passband Flatness	dB			1.0			
Channel Uniformity	dB			1.5			
Channel Isolation (Mux)	dB			N/A			
Channel Isolation (Demux)	dB			25			
Max. Polarization Dependent Loss	dB			0.1			
Max. Polarization Mode Dispersion	ps			0.1			
Directivity	dB			55			
Min. Return Loss	dB			45			
Center Wavelength Stability	nm/°C			0.002			
Thermal Stability	dB/°C			0.006			
Max. Optical Power	mW			300			
Tensile Load	N			5			
Fiber Type				SMF-28 fiber			
Operating Temperature	°C			-5 to +70			
Storage Temperature	°C			-40 to +85			
Package Dimensions	mm	100 × 80 × 9.5 (4 Ch), 133 × 95 × 9.5 (8 Ch), 150 × 115 × 14 (16 Ch)					

\*IL is 0.3 dB higher, RL is 5 dB lower for each connector added.

### Package Dimensions



### Ordering Information

**DWDMM-①-②②-③-④④-⑤-⑥-⑦**

- |                        |                    |                   |                       |
|------------------------|--------------------|-------------------|-----------------------|
| ①: Module Type         | ③: Channel Spacing | ⑤: Connector Type | ⑥: Fiber Type         |
| M - MUX                | 1 - 100 GHz        | 1 - FC/UPC        | B - 250 μm bare fiber |
| D - DEMUX              | 2 - 200 GHz        | 2 - FC/APC        | L - 900 μm loose tube |
|                        |                    | 3 - SC/UPC        | C - 3 mm cable        |
| ②②: Number of Channels | ④④: First ITU Grid | 4 - SC/APC        | S - Specify           |
| 04 - 4 channels        |                    | N - None          |                       |
| 08 - 8 channels        |                    | S - Specify       |                       |
| 16 - 16 channels       |                    |                   | ⑦: Fiber Length       |
|                        |                    |                   | H - 0.5 m             |
|                        |                    |                   | S - Specify           |