

## E1 PDH Multiplexer Chassis

6U height, 12 slots, up to 24 optical channels, compatible with 4E1 8E1 and 16E1 Multiplexer

---



### Overview

Fibridge E1 PDH Multiplexer can combine up to 16E1 and 4-ports Ethernet (10/100Mbps line speed) signals in one fiber channel to transmit. It is suitable for low capacity, point-to-point application of remote transmission. The circuit part of the equipment is fully digitized. The whole equipment is reliable, stable, easy to install and maintain. It has good temperature and voltage characteristics, complete alarm functions, one RS232 asynchronous interface and remote loop back functions (from software). The 12-slot chassis FC-912 expands the number of the ports and can be managed by the management system Fi-view-MP in SNMP/WEB/Console mode.

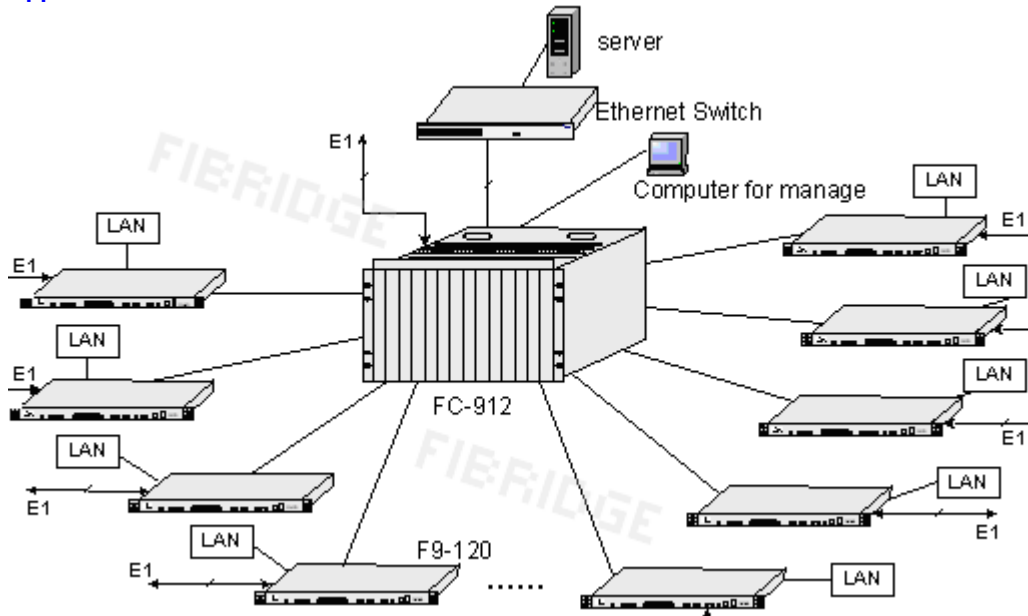
### Hardware Feature

- 6U height, up to 12 slots, 24 optical channels
- Compatible with 4E1 8E1 16E1 PDH Multiplexer
- management card supports hot-swap plug
- Management card has one RS232 port for console management, and one RJ45 port for SNMP&WEB management
- DC-48V power supply, 220VAC is optional

### Software Feature

- Monitor the port's status of optical port & E1 port & ethernet of local & remote device
- Set Local/Remote loop
- Set Alarm Sound enable/disable
- realtime alarm message popup
- History alarm message management
- User Management

## Application



## Order Information

[FC-912](#) 12-slot PDH Multiplexer Chassis

[FC-912-M](#) Management Card of FC-912

[FP-9075A](#) 75W AC220VAC Power Supply Module