

E1 PDH multiplexer series

- **4E1 PDH Multiplexer**
- **4E1 8E1 PDH Multiplexer**
- **16E1 PDH Multiplexer**
- **E1 PDH Multiplexer Chassis**

4E1 PDH Multiplexer

2*10/100Mbps line-speed ethernet ports optional,E1 support Both 75ohm & 120ohm

Overview

4E1 PDH Multiplexer can multiplex 4E1 and 2-ports Ethernet (10/100Mbps line speed) signals in one fiber channel to transmit. It is suitable for low capacity, point-to-point application of remote transmission. The circuit part of the equipment is fully digitized. The whole equipment is reliable, stable, easy to install and maintain. It has good temperature and voltage characteristics, complete alarm functions, one RS232 asynchronous interface and remote loop back functions(from software). At the same time, it can be managed from management software Fi-View-MP.

Features

- Providing up to 4 E1 channels and 2 optional 10/100Mbps Ethernet channel
- Fiber port bit rate: 150Mbps, up to 120Km distance without repeater
- E1 Line code: HDB3, compliant to G.703, G.823 and G.742.
- E1 channel support both 75ohm & 120ohm impedance
- Ethernet port support 10/100Mbps auto-detection, Full/Half Duplex auto-negotiation
- Ethernet port can transmit VLAN tag
- Complete alarm functions
- Providing an RS232 asynchronous interface
- Supporting the local/remote E1 loop back
- Remote loop back provided by software and hardware
- Providing RS232 port for management, GUI interface
- Standalone,220VAC or -48VDC power supply optional

Specifications

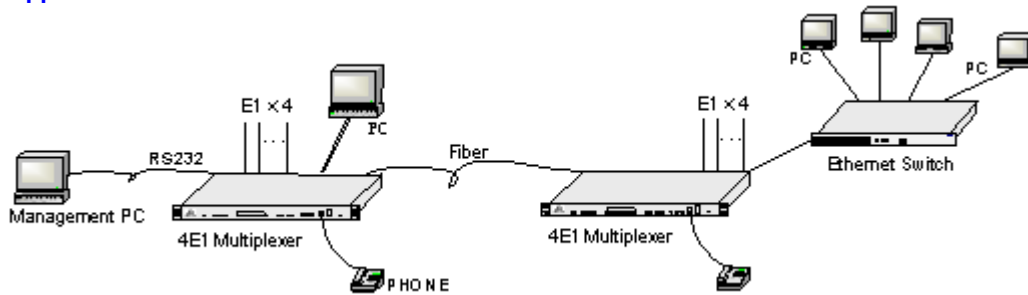
- Optical Port
Port number: 1
Bit rate: 150Mb/s+/-50ppm
Wavelength: 1310nm, 1550nm
Distance: 0 - 120Km
Connector: FC/PC
- E1 Port
Port number: 4
Bit rate: 2.048Mbps(+/-100ppm)
Impedance: 75ohm and 120ohm
Line Code: HDB3, compliance with ITU-T G.703
- Ethernet Port
Port number: 2, optional
Speed: 10/100Mbps line speed
Duplex: Half/Full auto-negotiate
Frame Size: 64 - 1536 bytes
MAC address: 1k
MAC aging time: 5mins
- Power Supply

Input voltage: When -48V, -40V ~ -60V (DC) is allowed
When ~220V, -175V, ~264V (AC) is allowed.

Overall power : 5W

- Operating Environment
Temperature: 0oC --45oC
Humidity: 95%, no condense
- Standalone Size
483mm(L)*44.45mm(W)*200mm(H)
Weight: 2kg

Application



Order Information

[F9-120-04FA](#) 4E1 port Multiplexer, 75&120ohm both OK, Optical port: distance:40km, FC/PC, SM1310nm, Standalone, 220VAC power supply

[F9-120-04F23A](#) 4E1 port Multiplexer, 75&120ohm both OK, 2-port 10/100Mbps line-speed Ethernet. Optical port: distance:40km, FC/PC, SM1310nm, Standalone, 220VAC power supply

[F9-120-04FD](#) 4E1 port Multiplexer, 75&120ohm both OK, Optical port: distance:40km, FC/PC, SM1310nm, Standalone, -48VDC power supply

[F9-120-04F23D](#) 4E1 port Multiplexer, 75&120ohm both OK, 2-port 10/100Mbps line-speed Ethernet. Optical port: distance:40km, FC/PC, SM1310nm, Standalone, -48VDC power supply

4E1 8E1 PDH Multiplexer

2*10/100Mbps line-speed ethernet ports optional, 2 redundant backup Optical ports



Overview

4/8E1 PDH Multiplexer can multiplex 4E1 or 8E1 and 2-ports Ethernet (10/100Mbps line speed) signals in one fiber channel to transmit. It is suitable for low capacity, point-to-point application of remote transmission. The circuit part of the equipment is fully digitized. The whole equipment is reliable, stable, easy to install and maintain. It has good temperature and voltage characteristics, complete alarm functions, one RS232 asynchronous

interface and remote loop back functions(from software). At the same time, it can be managed from management software Fi-View-MP through its Console port or through chassis FC-912.

Features



- Providing up to 8 E1 channels and 2 optional 10/100Mbps Ethernet channel
- Fiber port bit rate: 150Mbps, up to 120Km distance without repeater
- Fiber port support 2 ports redundant backup and ALS*

function

- E1 Line code: HDB3, compliant to G.703, G.823 and G.742.
- E1 channel support both 75ohm or 100ohm impedance
- Ethernet port support 10/100Mbps auto-detection, Full/Half Duplex auto-negotiation
- Ethernet port can transmit VLAN tag
- Complete alarm functions
- Providing an RS232 asynchronous interface
- Supporting the local/remote E1 loop back through software
- Providing RS232 port for management, GUI interface, It also can be managed from Chassis
- Standalone or Module optional , for standalone, 220VAC and -48VDC both OK

Specifications

- Optical Port
Port number: 1-2, support redundant backup
Bit rate: 150Mb/s+/-50ppm
Wavelength: 1310nm, 1550nm
Distance: 0 - 120Km
Connector: FC/PC
- E1 Port
Port number: 4 or 8
Bit rate: 2.048Mbps(+/-100ppm)
Impedance: 75ohm or 120ohm
Line Code: HDB3, compliance with ITU-T G.703
- Ethernet Port
Port number: 2, optional

Speed: 10/100Mbps line speed

Duplex: Half/Full auto-negotiate

Frame Size: 64 - 1536 bytes

MAC address: 1k

MAC aging time: 5mins

- Power Supply

Input voltage: When -48V, -40V ~ -60V (DC) is allowed

When ~220V, -175V ~ ~264V (AC) is allowed.

Overall power : 5W

- Operating Environment

Temperature: 0oC --45oC

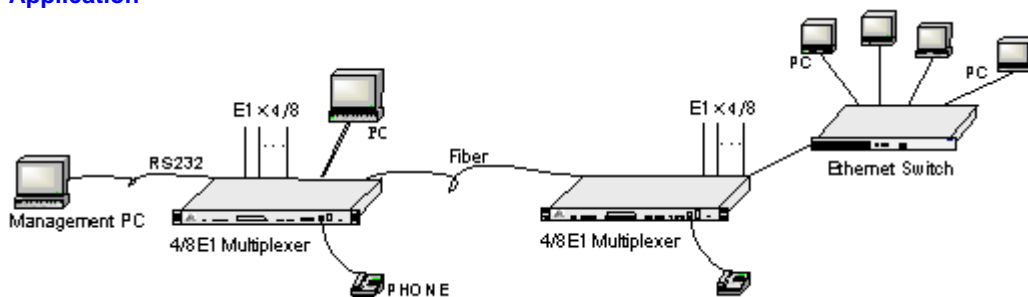
Humidity: 95%, no condense

- Standalone Size

483mm(L)*44.45mm(W)*200mm(H)

Weight: 2kg

Application



Order Information

- F9-120A2 4E1, 2 optical port, support redundant backup
- F9-120A3 4E1, 1 optical port, support ALS* function
- F9-120A4 4E1, 2 optical port, support redundant backup and ALS function
- F9-2402 8E1, 2 optical port, support redundant backup
- F9-2403 8E1, 1 optical port, support ALS function
- F9-2404 8E1, 2 optical port, support redundant backup and ALS function

*ALS: Automatic Laser Shutdown/Reduction)

16E1 PDH Multiplexer

4*10/100Mbps line-speed ethernet ports optional, 2 redundant backup Optical ports

Overview

16E1 PDH Multiplexer can multiplex 16E1 and 2-ports Ethernet (10/100Mbps line speed) signals in one fiber channel to transmit. It is suitable for low capacity, point-to-point application of remote transmission. The circuit part of the equipment is fully digitized. The whole equipment is reliable, stable, easy to install and maintain. It has good temperature and voltage characteristics, complete alarm functions, one RS232 asynchronous interface and remote loop back functions (from software). At the same time, it can be managed from management software Fi-View-MP through its Console port or through chassis FC-912.

Features

- Providing up to 16 E1 channels and 2 optional 10/100Mbps Ethernet channel
- Fiber port bit rate: 150Mbps, up to 120Km distance without repeater
- Fiber port support 2 ports redundant backup and ALS* function
- E1 Line code: HDB3, compliant to G.703, G.823 and G.742.
- E1 channel support both 75ohm or 120ohm impedance
- Ethernet port support 10/100Mbps auto-detection, Full/Half Duplex auto-negotiation
- Ethernet port can transmit VLAN tag
- 4 Ethernet ports is divided to two group which can't communicate with each other
- Complete alarm functions
- Providing an RS232 asynchronous interface
- Supporting the local/remote E1 loop back through software
- Providing RS232 port for management, GUI interface, It also can be managed from Chassis
- Standalone or Module optional, for standalone, 220VAC and -48VDC both OK

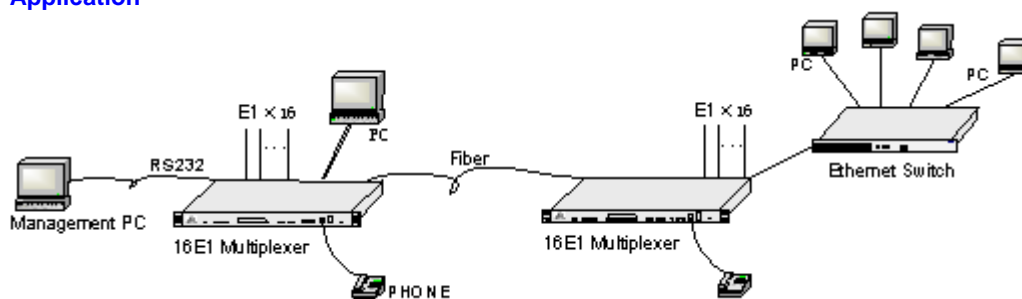
Specifications

- Optical Port
 - Port number: 1-2, support redundant backup
 - Bit rate: 150Mb/s +/- 50ppm
 - Wavelength: 1310nm, 1550nm
 - Distance: 0 - 120Km
 - Connector: FC/PC
- E1 Port
 - Port number: 16
 - Bit rate: 2.048Mbps (+/- 100ppm)
 - Impedance: 75ohm or 120ohm
 - Line Code: HDB3, compliance with ITU-T G.703
- Ethernet Port
 - Port number: 2, optional
 - Speed: 10/100Mbps line speed
 - Duplex: Half/Full auto-negotiate
 - Frame Size: 64 - 1536 bytes
 - MAC address: 1k

MAC aging time: 5mins

- Power Supply
Input voltage: When -48V, -40V ~ -60V (DC) is allowed
When ~220V, -175V ~ ~264V (AC) is allowed.
Overall power : 5W
Operating Environment
Temperature: 0oC --45oC
Humidity: 95%, no condense
Standalone Size
483mm(L)*44.45mm(W)*200mm(H)
Weight: 2kg

Application



Order Information

- F9-4802 16E1, 2 optical port, support redundant backup
- F9-4803 16E1, 1 optical port, support ALS function
- F9-4804 16E1, 2 optical port, support redundant backup and ALS function

*ALS: Automatic Laser Shutdown/Reduction)

E1 PDH Multiplexer Chassis

6U height, 12 slots, up to 24 optical channels, compatible with 4E1 8E1 and 16E1 Multiplexer



Overview

Fibridge E1 PDH Multiplexer can combine up to 16E1 and 4-ports Ethernet (10/100Mbps line speed) signals in one fiber channel to transmit. It is suitable for low capacity, point-to-point application of remote transmission. The circuit part of the equipment is fully digitized. The whole equipment is reliable, stable, easy to install and maintain. It has good temperature and voltage characteristics, complete alarm functions, one RS232 asynchronous interface and remote loop back functions (from software). The 12-slot chassis FC-912 expands the number of the

ports and can be managed by the management system Fi-view-MP in SNMP/WEB/Console mode.

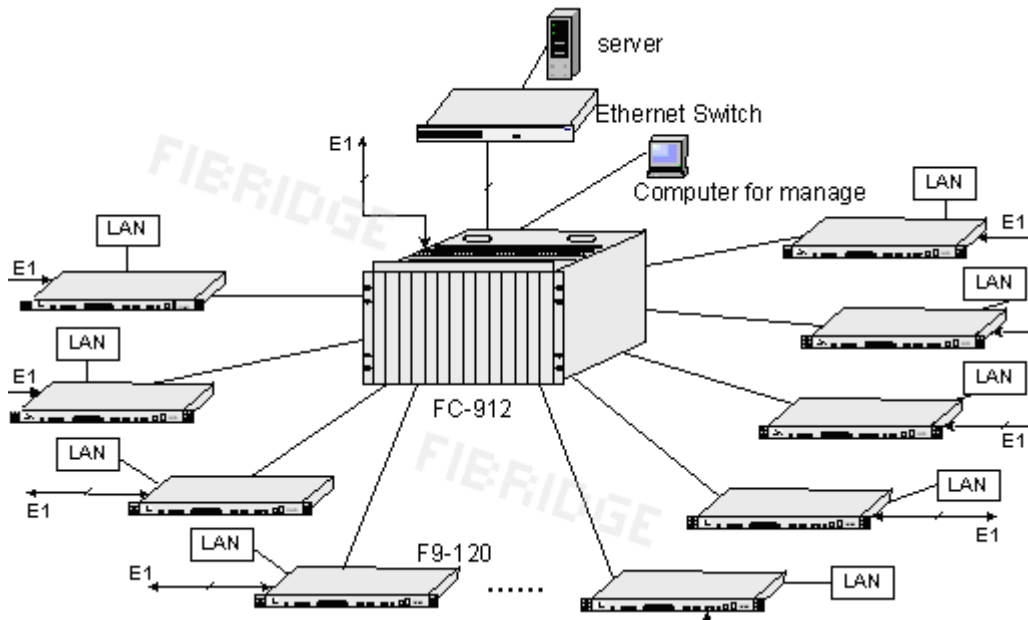
Hardware Feature

- 6U height, up to 12 slots, 24 optical channels
- Compatible with 4E1 8E1 16E1 PDH Multiplexer
- management card supports hot-swap plug
- Management card has one RS232 port for console management, and one RJ45 port for SNMP&WEB management
- DC-48V power supply, 220VAC is optional

Software Feature

- Monitor the port's status of optical port & E1 port & ethernet of local & remote device
- Set Local/Remote loop
- Set Alarm Sound enable/disable
- realtime alarm message popup
- History alarm message management
- User Management

Application



Order Information

[FC-912](#) 12-slot PDH Multiplexer Chassis

[FC-912-M](#) Management Card of FC-912

[FP-9075A](#) 75W AC220VAC Power Supply Module