

FMS-025

Mechanical Splice



Features

- For 125µm single fibre 250µm coat (SM/GI)
- Reliable connection in seconds
- Connection loss of less than 0.1 dB average
- Return loss of more than 50 dB average
- L40 x W4 x H4mm in size
- Deployable in existing closures & cabinets
- Easy to use assembly tool

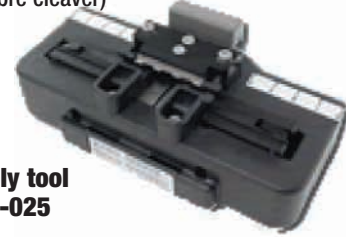
Product Specifications

Size: L40 x H4 x W4 mm
 Weight: 30 grams
 Fibre Type: 125 um single fibre SM/GI
 Coat Size: 250 um outer diameter
 Insertion Loss: 0.4 dB MAX
 Return Loss: 40 dB MIN

Assembly Tool for FMS - 025
 Size: L138 x H45 x W73 mm
 Weight: 165 grams

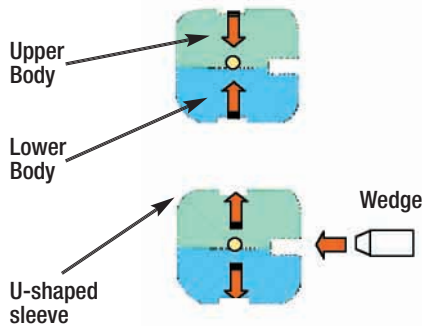
Ordering Information

Splice unit FMS-025
 Assembly tool set FMSECOEZ-KIT025-00
 (without fibre cleaver)



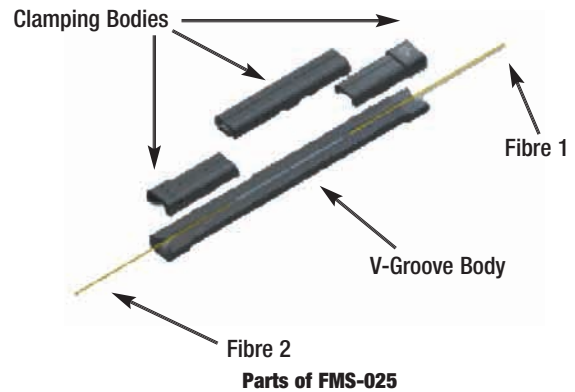
Assembly tool for FMS-025

Product Usage & Illustrations



Assembly method

Note: Clamp bodies are shaded differently for better illustration



Parts of FMS-025

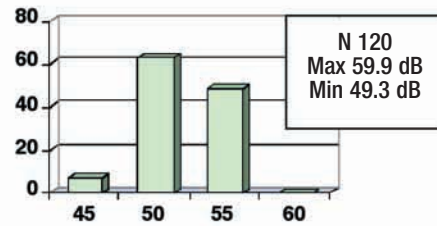
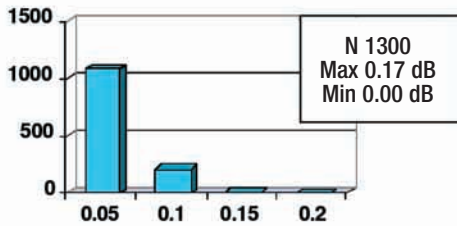
Product Performance¹ Table

Description	Standard	dB
Mean Insertion Loss	IEC 61300-3-4	0.03
Mean Return Loss	IEC 61300-3-6	54

*Measurements Based on SM Fibre Only

Description	Standard	dB
Insertion Loss Std. Deviation	IEC 61300-3-4	0.02
Return Loss Std. Deviation	IEC 61300-3-6	3

FMS-025 Performance Chart



Mechanical Characteristics¹

Axial pull, 3.0N	IEC 61300-2-6	$\Delta \leq 0.03$	Off axis pull 90°, 0.05N	JIS 5961	$\Delta \leq 0.02$
Vibrate 3 axes 2hr/ axis	IEC 61300-2-1	$\Delta \leq 0.02$	Impact test, 100G	IEC 61300-2-12	$\Delta \leq 0.02$

Environmental Performance¹

Heat cycles - 40°C ~ 70°C	IEC 61300-2-22	$\Delta \leq 0.04$	Humidity cycles - 10°C ~ 65°C, 95% RH	IEC 61300-2-21	$\Delta \leq 0.03$
High temperature, 70°C, 240hr	IEC 61300-2-18	$\Delta \leq 0.04$	Low temperature - 40°C, 240hr	IEC 61300-2-17	$\Delta \leq 0.04$
Heat & humidity test	GR-326-CORE	$\Delta \leq 0.06$	5% salt spray, 24hr	IEC 61300-2-26	$\Delta \leq 0.02$

¹Disclaimer – Performance data given on this page shall not be used as basis for any form of accusations or claims made to the manufacturer. This data is meant to provide clients with a better understanding of the products' overall performance.

SPECIFICATIONS AND DESCRIPTIONS ARE SUBJECT TO CHANGE WITHOUT PRIOR NOTICE.