

# Compact Low Cost Pre-Amplifier EDFA (Gain Block)



## Features/Benefits

- Low cost
- Low power consumption
- Wide operating temperature range
- Small footprint
- Output power monitor

## Applications

- Metropolitan and access networks
- Digital CATV
- Amplifier for long-haul network
- Single-channel or DWDM sub-systems
- Optical add/drop modules

## Gain Block Pin Assignment

Pin	Description
1	Pump laser diode anode (+)
2	Pump laser diode cathode (-)
3	Pump laser PD anode (+)
4	GND
5	Output monitor PD anode (+)
6	Output monitor PD cathode (-)

Pump laser diode anode shares the same pin with pump laser PD cathode

## Safety Information

### ESD Protection

The laser diodes and photodiodes in the module can be easily destroyed by electrostatic discharge. Use wrist straps, grounded work surfaces, and anti-static techniques when operating this module. When not in use, the module shall be kept in a static-free environment.

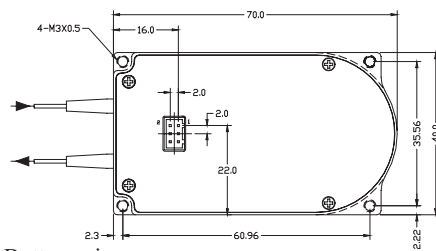
## Optical Specifications

Parameters	Unit	Min.	Typ.	Max.
Operating Wavelength Range	nm	1528	-	1562
Input Optical Power (Pin)	dBm	-30	-	-10
Signal Gain @ Pin= -30dBm	dB	20	-	-
		25	-	-
Noise Figure @Pin= -30dBm	dB	-	5	6
Polarization Dependent Gain	dB	-	-	0.5
Polarization Mode Dispersion	ps	-	-	0.5
Return Loss (Pump LD off)	dB	35	-	-
Operating Temperature Range	°C	-5	-	70
Fiber Type	-	SMF-28, 900µm loose tube		
Dimensions	mm	40 x 70 x 12		

## Electrical and Mechanical Specifications

Parameters	Unit	Min.	Typ.	Max.
Pump Laser Threshold Current	mA	-	-	150
Pump Laser Forward Current (BOL)	mA	-	210	300
Pump Laser Forward Voltage	V	-	1.66	1.95
Pump Laser Reverse Voltage	V	-	-	2.0
Output Monitor PD Responsivity	µA / mW	20	-	-
Output Monitor PD Reverse Voltage	V	-	5	20
Output Monitor PD Forward Current	mA	-	-	10
Dark Current (-5V, 25°C)	nA	-	-	1

## Dimensions



Bottom view



Side view

Unit: mm

## Ordering Information

N	O	A	P	G			0	0	0	0	0	1	1	
					Signal Gain @Pin= -30dBm							Fiber Length	Connector	
					20= 20dB							1= 1.0±0.1m	0= None	
					25= 25dB								1= FC/UPC	
											2= FC/APC			
											3= SC/UPC			
											4= SC/APC			
											5= LC/UPC			
											6= MU/UPC			
										Pigtail Type				
										1= 900µm loose tube				

This product information is subject to change without notice.