



Product Specifications

Revision	1.0
Date:	December 17, 2007
Product Description	Miniature 1x1 and 1x2 Optomechanical Switch (Latching or Non-Latching Type)
Model Number	OSXXXXXH00X0XXX
Customer Part Number	NA
Customer Specification	NA

Revision History				
Revision #	Log #	Date	Author	Change Notes
1.0	standard	12/17/07	Yiching Lin	Initial Release

1. PERFORMANCE SPECIFICATIONS

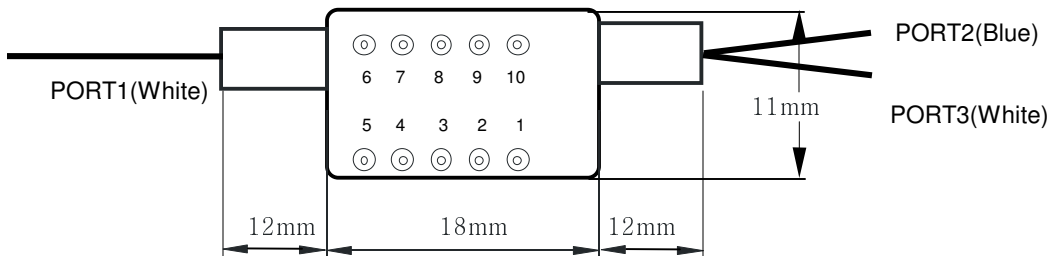
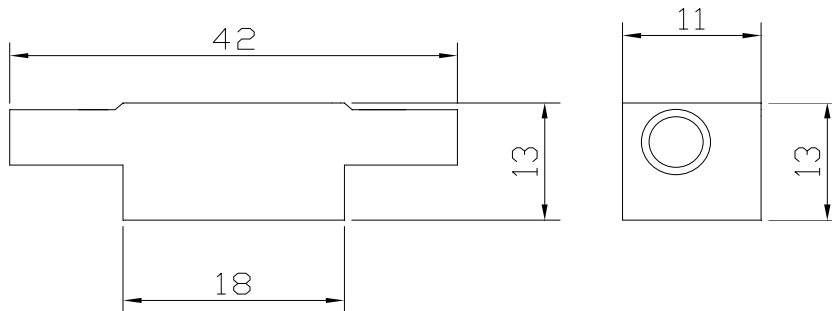
Unless otherwise noted, specifications listed in this section are guaranteed for operating temperature range.

Parameters	Units	Specifications
Wavelength Range	nm	1260~1360 and/or 1510~1610
Insertion Loss	P Grade	≤0.5
	A Grade	≤0.7
WDL	Single Window	<0.15
	Dual Window	<0.25
PDL	dB	≤0.10
Return Loss	dB	≥50
Cross Talk	dB	≥60
Optical Power Handling	mW	500
Cycle Rate	Hz	≤10.0
Switching Time	ms	≤4.0
Durability	cycles	>10 million
Switching Voltage	V	4.5 ~ 5.0
Fiber Type	-	Corning SMF-28
Operating Temperature	°C	0 ~ 70
Storage Temperature	°C	-40 ~85
Packaging Dimensions	mm	18(L) × 11(W) × 13(H)

NOTE: INSERTION LOSS AND RETURN LOSS ARE SPECIFIED WITHOUT CONNECTORS.

Product Specifications

PACKAGING DIMENSIONS (mm)



Product Specifications

2. ELECTRIC CONFIGURATION

Non-Latching Type

CONFIGURATION		DRIVE		STATUS CONTACTS			
1X2	1X1	PIN 2	PIN 9	PIN 4-5	PIN 3-4	PIN 7-6	PIN 8-7
PATH 1-2	PATH 1-2	+5V	GND	CLOSED	OPEN	CLOSED	OPEN
PATH 1-3	NO LIGHT	N/A	N/A	OPEN	CLOSED	OPEND	CLOSED

Latching Type

CONFIGURATION		DRIVE		STATUS CONTACTS			
1X2	1X1	PIN 2	PIN 9	PIN 4-5	PIN 3-4	PIN 7-6	PIN 8-7
PATH 1-2	PATH 1-2	+5V	GND	CLOSED	OPEN	CLOSED	OPEN
PATH 1-3	NO LIGHT	GND	+5V	OPEN	CLOSED	OPEND	CLOSED

3. ORDERING INFORMATION

