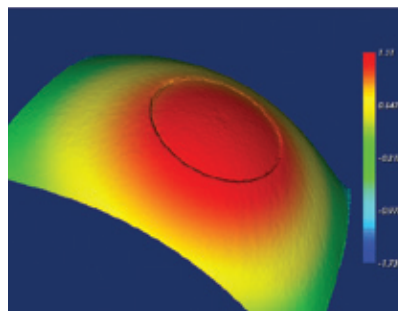
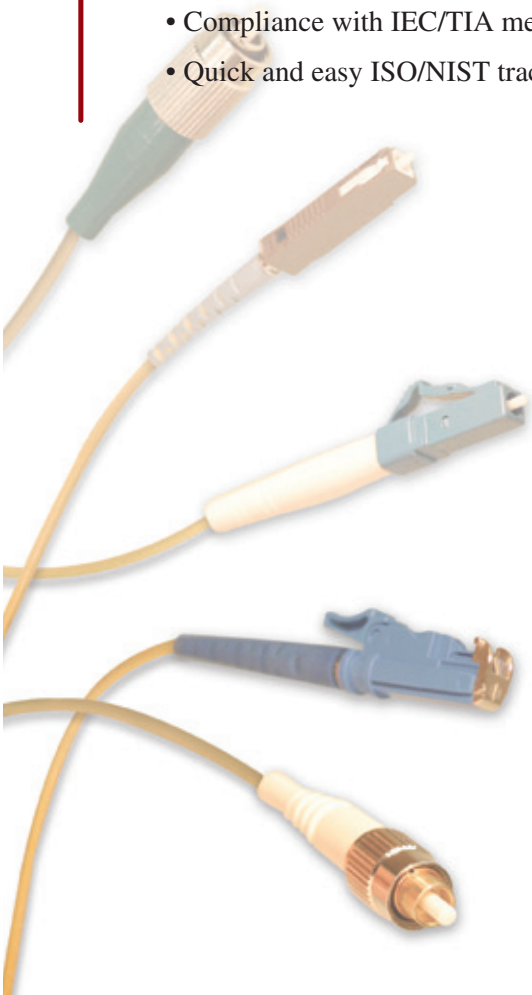


Fiber Optic Connector Testing

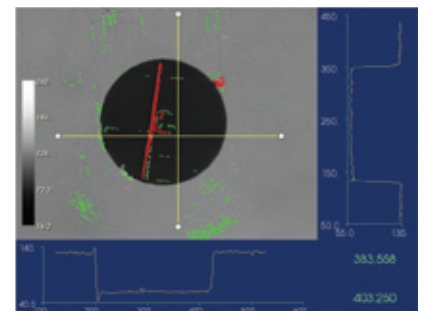
FiBO[®] 250 is a phase-shifting interferometer for non-contact, fiber optic connector endface testing. 3D surface metrology and defect detection are combined in one compact, portable system.

System Features

- Automatic radius of curvature, fiber height and apex offset measurements
- Automatic pass/fail defect analysis
- High resolution imaging for accurate results
- Patented kinematic adapters for exact fiber positioning
- Interchange adapters without calibration
- Vibration-insensitive, compact design
- User-friendly FiBO Code[™] software
- Compliance with IEC/TIA measurement standards
- Quick and easy ISO/NIST traceable calibration



High definition 3D graphics



Detailed defect display

