

SLC-C2 Series

LC HOUSING

- for \varnothing 2 mm cord -

TECHNICAL SPECIFICATIONS



SEIKOH GIKEN Co.,Ltd.

Fiber Optic Products Division

296-1, MATSUHIDAI, MATSUDO-SHI,
CHIBA, 270-2214 JAPAN.

TEL: +81-47-388-6111 FAX: +81-47-388-4477

SLC-C2 Series LC HOUSING - for \varnothing 2 mm cord -
TECHNICAL SPECIFICATIONS

ACD-08B4-01	August	2000
ACD-08B4-02	February	2001
ACD-08B4-03	May	2005
S05-H003-01E	June	2006
S05-H003-02E	September	2006

Copyright © 2000 - 2006 by **SEIKOH GIKEN Co.,Ltd.**
All right reserved.

The information contained herein shall not be reproduced or disclosed to any third party without the express written consent of SEIKOH GIKEN Co., Ltd.
The specifications contained herein are subject to change without notice.

Please address any questions, comments, and suggestions to:

SEIKOH GIKEN USA, Inc.
Headquarters

4405 International Blvd., Suite B109
Norcross, GA 30093 U.S.A.
TEL: +1-770-279-6602 FAX: +1-770-279-8839

Northeastern Field Office

714 Executive Drive
Princeton, NJ 08540
TEL: +1-609-279-0225 FAX: +1-609-279-0207

Western Field Office

21250 Hawthorne Boulevard, Suite 700
Torrance, CA 90503
TEL: +1-310-792-7450 FAX: +1-310-792-7451

SEIKOH GIKEN Europe GmbH
Frankfurt Branch

Siemensstrasse 9
D-63263 Neu-Isenburg, Germany
TEL: +49-6102-297-701
FAX: +49-6102-297-750

SEIKOH GIKEN Hong Kong Co.,Ltd.

Concordia Plaza 21/F Rm2111,
1 Science Museum Road, Tsim Sha Tsui East,
Kowloon, Hong Kong.
TEL: +852-26206551 FAX: +852-26206525

TABLE OF CONTENTS

Section	Page
1 SCOPE	1
2 PART NUMBER	1
3 GENERAL SPECIFICATIONS	2
3.1 Parts and Materials	2
3.2 Physical Dimensions	2
3.3 General Tolerance	2
3.4 Appearance	2
4 PACKING	3
5 IDENTIFICATION	3
6 HANDLING AND CARE	3
6.1 Conditions of Storage	3
6.2 Precautions of Use	3
6.3 Disposal	3

Table

Table 1	Part Number	1
Table 2	Parts and Materials	2
Table 3	General Tolerance	2

Figure

Figure 1	SLC-C2 Series Housing	4
Figure 2 to 7	Dimensions of Parts	5 to 7

1 SCOPE

These specifications apply to the SLC-C2 LC series housing - for ø 2 mm cord - supplied by SEIKOH GIKEN Co., Ltd.

2 PART NUMBER


Part number of the housing is shown in Table 1.

Table 1 Part Number

MODEL Number		TYPE Number							
SLC-C2		3	2	0	C	3	0	1	G

Boot Color	
0	No Boot
2	Red
3	Light Gray
5	Blue
7	Yellow
8	Green

Boot I.D. [mm]	
0	No Boot
2	for ø 1.6 to 2 cord

Marking of Boot	
0	 SG

Auxiliary digit	
1 G	

Specification	
0	Crimping ring with White heat-shrinkable tubing
Y	Crimping ring with Yellow heat-shrinkable tubing

Package	
3	Bulk Package

Cap	
0	No Cap
C	White Frame Cap

3 GENERAL SPECIFICATIONS

3.1 Parts and Materials

Parts and materials are shown in Table 2.

Table 2 Parts and Materials

Item	Part Name	Qty	Material	Notes
①	Plug frame	1	PPSU	Blue, Flammability UL94 V-0
②	Spring	1	Stainless Steel	-
③	Stopper	1	PPSU + Brass	Blue, Flammability UL94 V-0 Brass: Nickel plating
④	Crimping ring	1	Aluminum Alloy + Heat-shrinkable tubing	Heat-shrinkable tubing: Flammability UL224 VW-1
⑤	Boot	1	TPEE	Flammability UL94 V-0
⑥	Cap	1	TPEE	Frame Cap White, Flammability UL94 V-0

Note: Item on Table 2 corresponds to the item reference number on Figure 1 to 7.

3.2 Physical Dimensions

Figure 1 shows the SLC-C2 series housing.

Figure 2 to 7 show the dimensions of the parts.

· In accordance with IEC 61754-20 Type LC connector family.

3.3 General Tolerances

Permissible deviation in dimensions without tolerance indication is in accordance with ISO 2768-m (JIS B 0405-m), as shown in Table 3.

Table 3 General Tolerance (ISO 2768-m)

Basic size step [mm]		Permissible deviation [mm]
Over	Under	
0.5	3	±0.1
3	6	±0.1
6	30	±0.2
30	120	±0.3

3.4 Appearance

There should be no burr, peeling of plating or scratches that affect the product.

4 PACKING

The product is packed to prevent damage during shipment.

5 IDENTIFICATION

Identification label should indicate the part number and the lot number of the product(s) and should be permanently attached to the packing bag.

6 HANDLING AND CARE

6.1 Conditions of Storage

Keep the product, in the packing bag, at the following conditions for its storage.

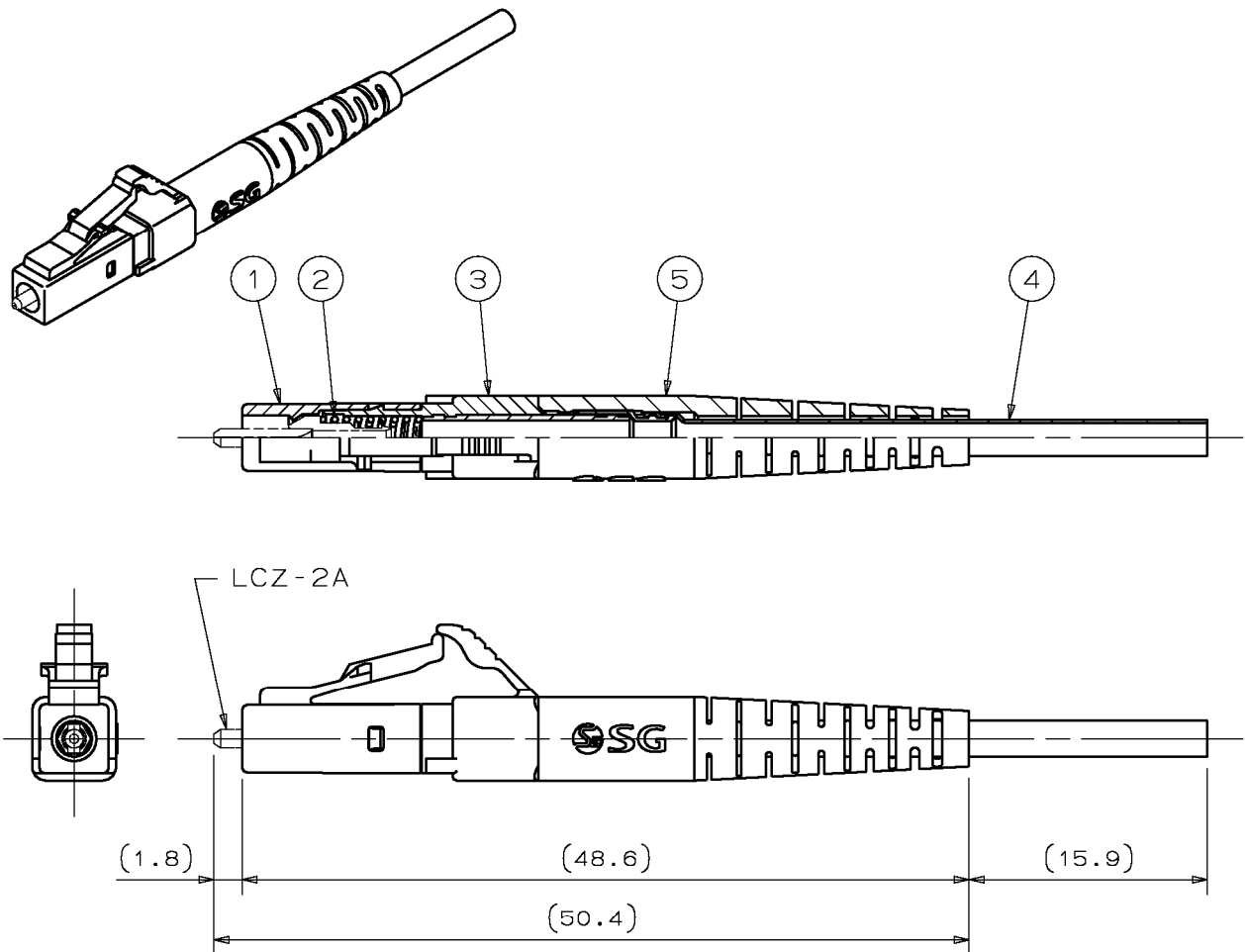
- Storage temperature: -40 to +85 degrees C
- Storage humidity: 0 to 85%RH, non-condensing

6.2 Precautions for Use

Contamination, oil, sweat and others debris on the ferrule end face may influence the performance of the product. If contamination is on the ferrule end face, wipe the end face with the end face cleaner.

6.3 Disposal

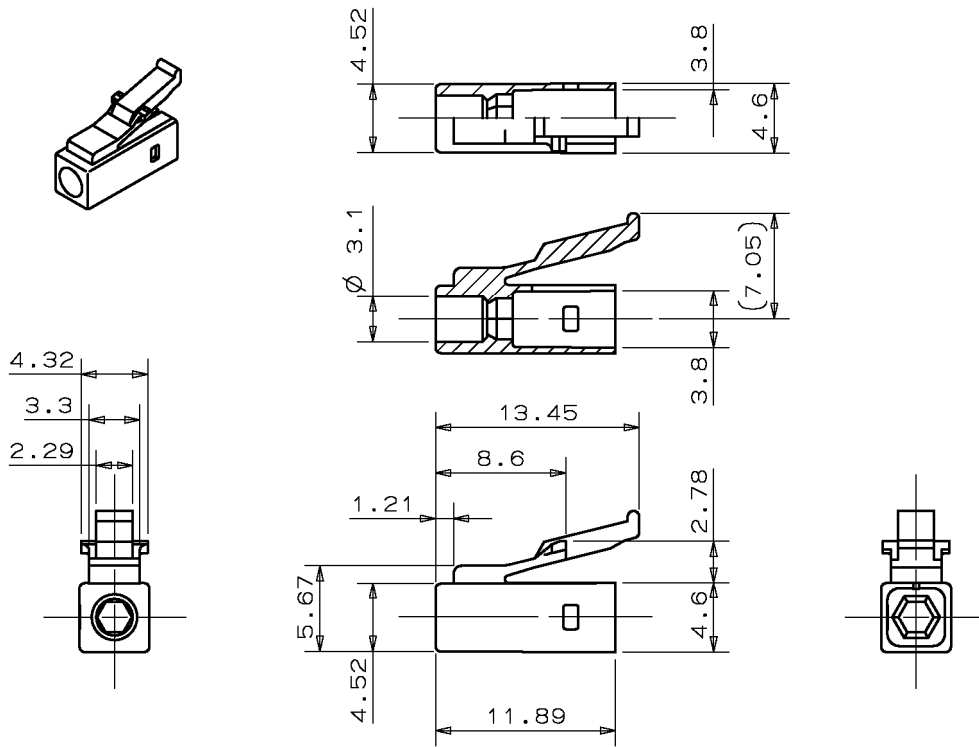
When discarding this product, please follow the regulations of your own country.



- Notes: 1 This drawing shows the tentatively assembled condition including LCZ-2A ferrule.
On practical shipment of SLC-C2 housing, this tentative assembly is not available.
- 2 This drawing does not include the cap.
- 3 The ferrule is not included in SLC-C2 housing.

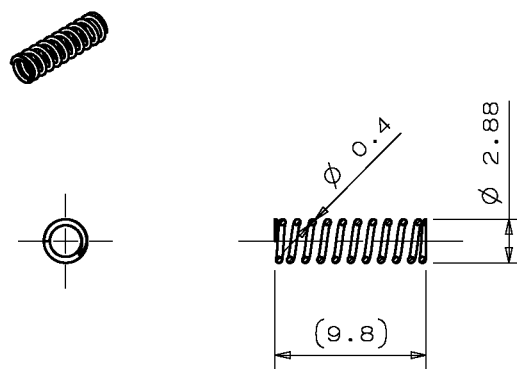
Unit: mm

Figure 1 SLC-C2 Series Housing



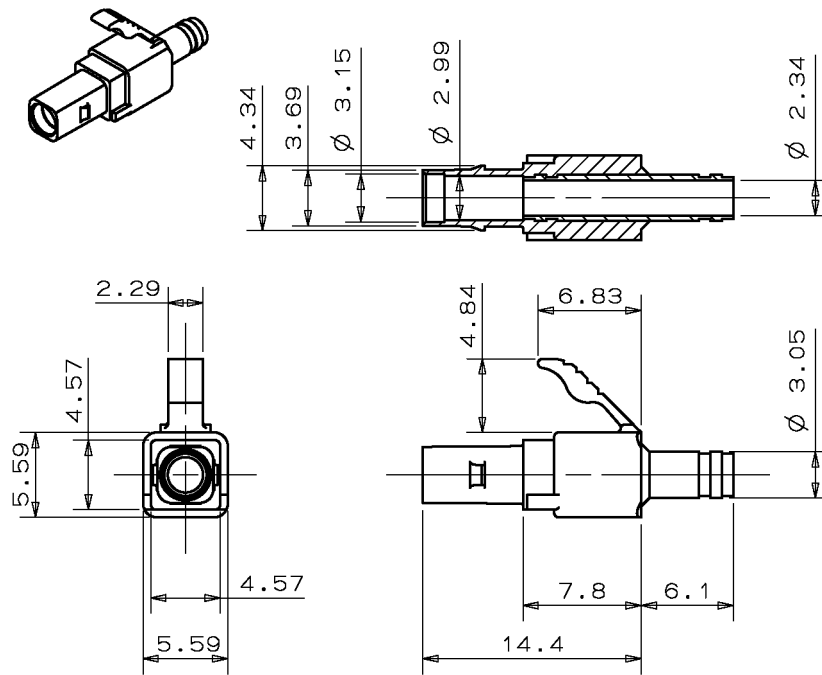
Unit: mm

Figure 2 ① Plug frame



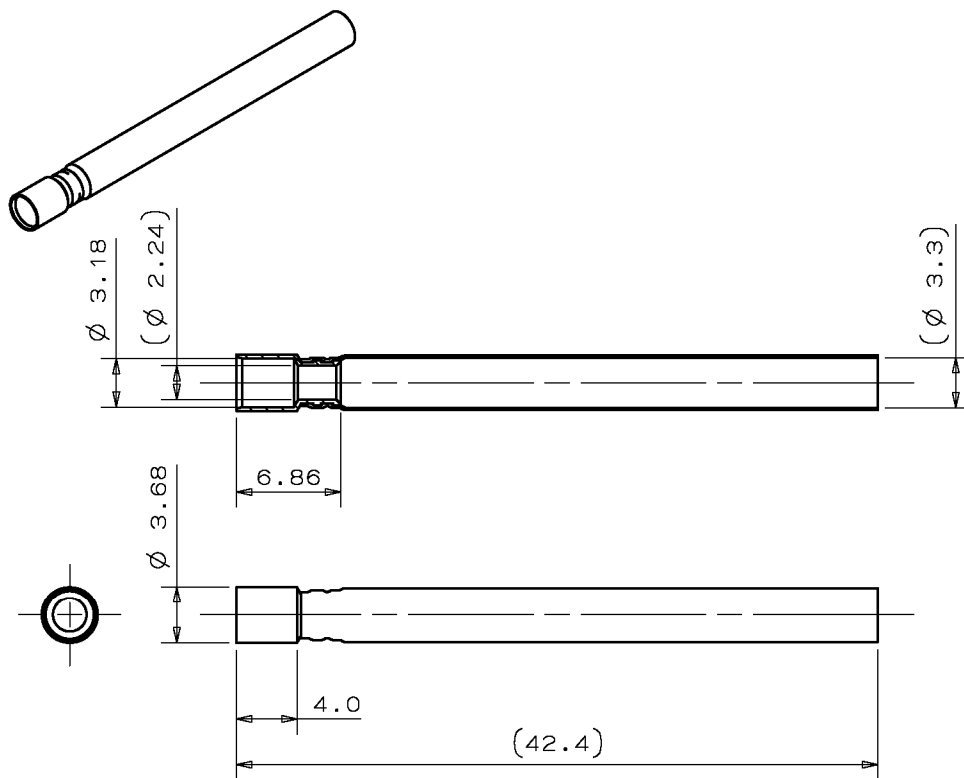
Unit: mm

Figure 3 ② Spring



Unit: mm

Figure 4 ③Stopper



Unit: mm

Figure 5 ④Crimping Ring

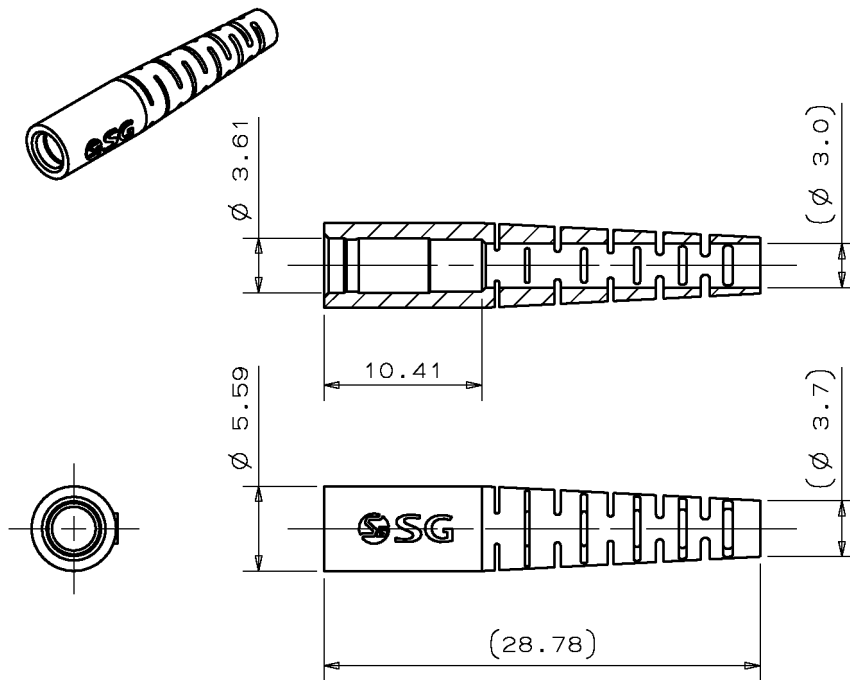


Figure 6 ⑤Boot

Unit: mm

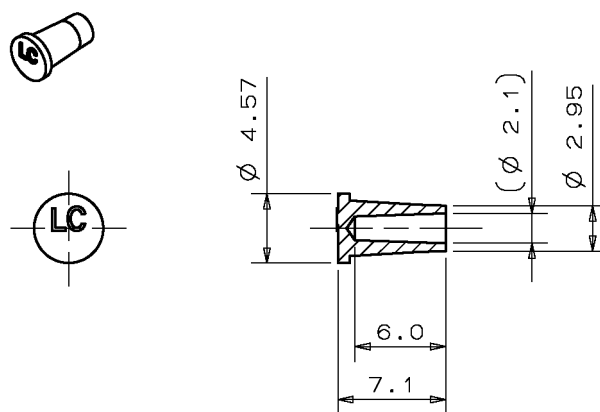


Figure 7 ⑥Cap

Unit: mm