

[REPAIR POLISHER]

- Based on our proprietary rotation mechanism and with our long experience in polishing technology, this machine was specially designed for repolishing damaged connector endface

SFP-Lite (Repair Mate™)



Structure

- 1-axis polishing & portable (weight only 600g)
- User-friendly one touch button operation

Features

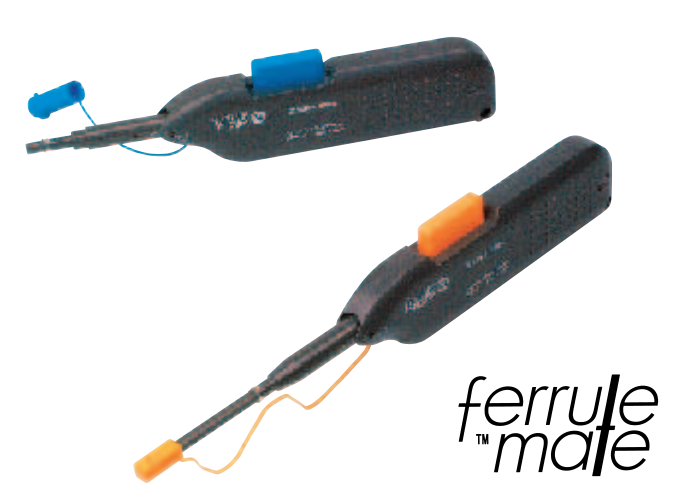
- New rotation mechanism enables the removal of fiber endface scratches while maintaining ferrule endface geometry
- Polishing holder equipped with IPC mechanism provides stable polishing result regardless of ferrule length.
- Suitable for field use (AA battery operation)
- Polishing holders for various connector types are available.

Application	Repolishing only
# of axis	1
Dimension	94 × 75 × 140mm
Weight	600g
Power	Size AA battery X 4pcs / AC/DC power adapter (100V ~ 240V)
Connector Type	SC, FC, ST, LC, MU (PC/APC)
Polishing Process	2 polishing steps

[ENDFACE CLEANER]

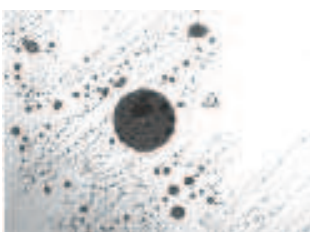
- Latest concept in endface cleaner
- Proprietary mechanism for simultaneous forwarding and rotating cleaning cloth provides effective endface cleaning

SFM-250/125 (Ferrule Mate™)



- Handy and high performance cleaner that fits in your hand and equips cleaning cloth achieves cleaning more than 300 times
- Originally developed mechanism for simultaneous forwarding and rotation of cleaning cloth contamination easily removes ferrule, which existing product is hardly ever done
- Tapered tip is ideal for cleaning inside of adapter. Also, by using protection cap, single connector endface can be cleaned

Part Number	SFM-250 (φ2.5mm)	SFM-125 (φ1.25mm)
Application	Ferrule endface cleaning for inner adapter or single connector	
Dimension (body)	L163×W20×H44 mm	
Dimension (tip)	L=63mm	L=110mm
Weight	60g	
Operation	Push button operation	
Life	More than 300 times	
Connector/Adapter Type	SC, FC, ST (both PC and Angle PC)	MU, LC (both PC and Angle PC)



Before



After