

BUY NOW 

Broad-Band Low PMD Fiber Optical Isolator

(Patent pending)

Product Description

This series optical Isolator is a passive device based on TGG material to provide a broad band laser transmission from 680 to 1070nm in the normal direction while minimizing back reflection and back scattering in the reverse direction for any state of polarization. With Agiltron's proprietary configuration, the new isolator features extremely low polarization mode dispersion (PMD) in addition of low insertion loss, high isolation, compact structure, and high stability. This unique performance attribute makes it an ideal choice for very broadband SLD sources widely used in OCT and other optical fiber sensing systems. We currently offer a full range of polarization independent, single mode and multimode versions. Agiltron also provides customized design to meet special application or cost requirements.



Features

- Extremely low PMD
- High Isolation
- Low Insertion loss
- High Stability
- High Reliability
- Cost Effective

Applications

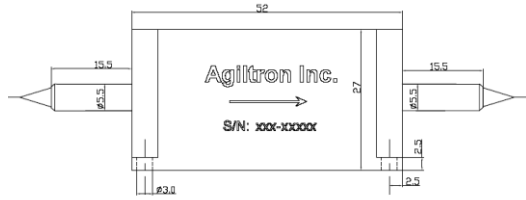
- Broadband SLD source
- Fiber Optic Sensor
- Test and Measurement
- Instrumentation

Performance Specifications

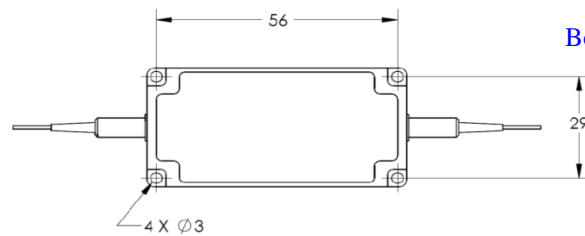
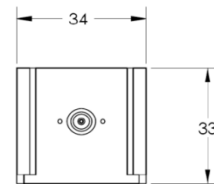
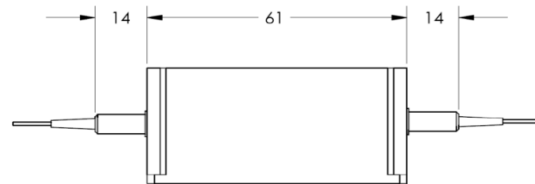
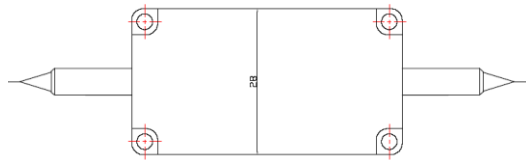
Extremely Low PMD Isolator		Min	Typical	Max	Unit
Operating Wavelength		680 ~ 1070			nm
Insertion Loss ^[1]			0.8	1.2	dB
Wavelength Dependent Loss				0.2	dB
Peak Isolation		24	27		dB
PDL			0.1	0.2	dB
PMD	SMF version		0.02	0.04	ps
	MMF version		0.05	0.12	ps
Return Loss	SMF version	50			dB
	MMF version	35			dB
Optical Power Handling			300		mW
Storage Temperature		-10		60	°C
Fiber Type		See order information			
Package Dimension		See design			mm

[1]. Measured without connectors. For MMF version, measured at CPR =14dB.

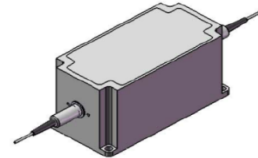
Mechanical Dimensions: Unit: mm



Box for wavelength shorter than 900nm



Box for wavelength 960 ~ 1070nm



*Product dimensions may change without notice. This is sometimes required for non-standard specifications.

Ordering Information

OIST-	1	1	2					
	Type	Wavelength	Grade	Package	Fiber Type	Fiber Length	Connector	
	Polarization Independent=1 1	1060nm = 1 1030nm = 3 980nm = 9 850nm = 8 780nm = 7 660nm = 6 Special = 0	Extremely low PMD = 2	Small = S Large = L	HI1060 = 2 HI980 = 9 HI780=7 MM50/125 = 5 Special = 0	Bare fiber=1 900um Loose tube=3 Special=0	0.25M=1 0.5M=2 1.0M=3 Special=0	None=1 FC/PC=2 FC/APC=3 SC/PC=4 SC/APC=5 ST/PC=6 LC=7 Special=0