

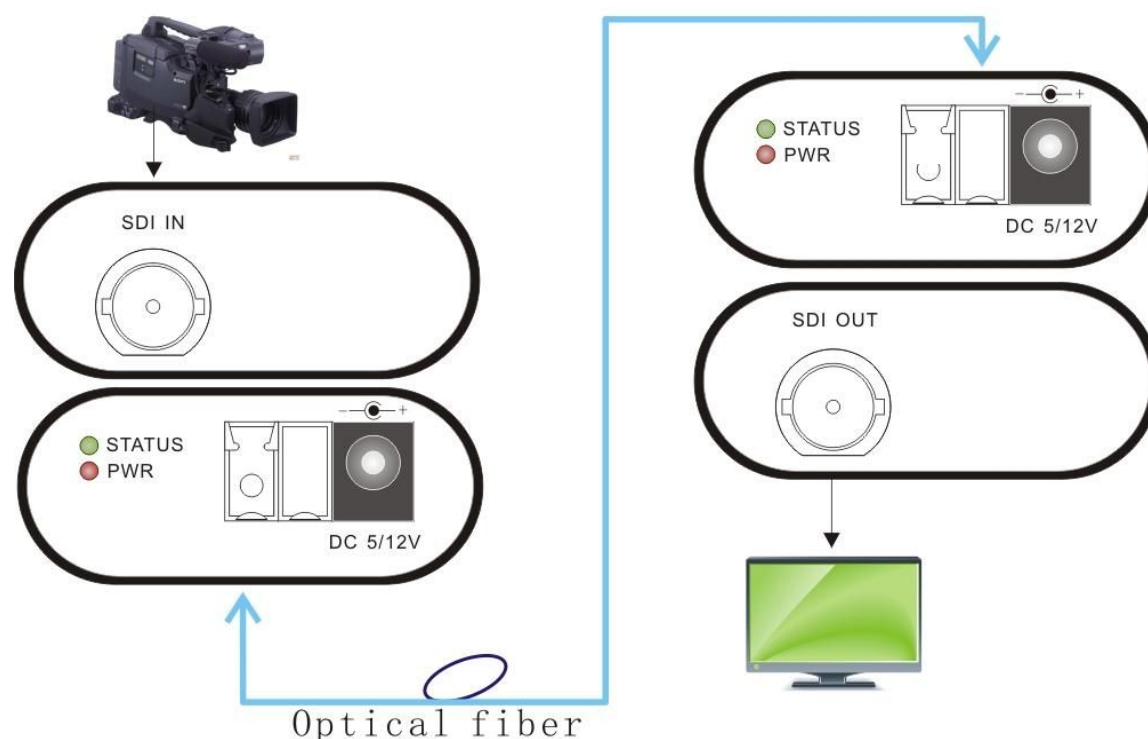
**FEATURES**

- 1 channel video and audio transmission of UHDTV/4K/8K/HDTV/SDTV SDI signal over optic fiber
- Handles pathological pattern
- Automatic cable equalization to ensure signal integrity
- With integrated reclocker 270Mbit/s, 1.48Gbit/s, 2.97Gbit/s, 5.94Gbit/s, 11.88Gbit/s
- Supports SMPTE ST-2082, ST-2081, 424M, 344M, 292M, 259M, DVB-ASI,
- Long transmission capability at least 500M (MM fiber)/10KM(SM fiber)
- Terminal block power input for industrial application
- Supports hot swapping and hot plugging
- Simplex LC/PC single mode optical connection

**DESCRIPTION**

12G-SDI to fiber convertor is an ideal and economic solution for broadcasting or surveillance applications. It receives one 12G/6G/3G/HD/SD -SDI electrical input, perfectly converts electrical SDI signal to fiber optic SDI signal. It supports transmission of UHDTV/4K/8K/HDTV/SDTV SDI signal.

Both transmitter and receiver provide equalizing and integrated reclocker at input unit in order to re-construct the signal for consistent quality. Besides, with advanced fiber technology, the 12G-SDI to fiber can easily pass pathological pattern to prove its complete transmission.

**Panel And Connection Graphs****Specifications:**

SDI input/output	
Signal format	SMPTE ST-2082, ST-2081, 424M, 344M, 292M, 259M, DVB-ASI,
Data rate	270Mbit/s, 1.48Gbit/s, 2.97Gbit/s, 5.94Gbit/s, 11.88Gbit/s
Cable Equalization	Automatic cable EQ (Belden 1694A cable) 75 m at 11.88 Gbps (4Kp60 UHD)

## Multi-rate 12G/6G/3G/HD/SD-SDI Video

VER0.1 03-04-2018

	120 m at 5.94 Gbps (UHD) 200 m at 2.97 Gbps (FHD) 280 m at 1.485 Gbps (HD) 600 m at 270 Mbps (SD)
SDI interface	BNC 75 Ohm
Fiber interface	LC/PC
Number of transmitter channel	1
Transmitter wavelength	1310 nm
Transmitter output power	-6~-1dBm (0±3dBm optional)
Number of receiver output	1
Receiver sensitivity	-14.4dBm~-1dBm
<b>General index</b>	
Input power	DC 5 V or 12V
Power consumption	<3W
Work Temp	-20°C to 70°C
Storage Temp	-40°C to 85°C
humidity	0 ~ 95% (non-condensing)
Case material	Aluminum
Net weight	210g /pair (with Power supply 440g/pair)