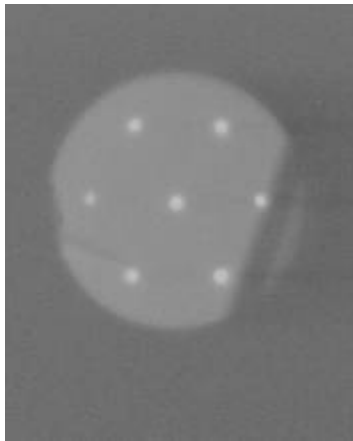


1x7 Single Mode Broadband Splitter



Product Features

- Low PDL
- Low Insertion Loss
- Stable and Reliable
- Compact Size

Product Applications

- Optical Communication System
- Optical Testing System
- FTTx and PONs
- Optical Power Distributor

Specifications			Splitting Ratio:		Even
Parameter		Unit	Premium		A grade
Port Configuration					1x7
Bandwidth		nm			±40
Insertion Loss	Max.	dB	10		10.8
Excess Loss	Typ.	dB	0.4		0.7
PDL	Max.	dB	0.2		0.25
Return Loss*	Min.	dB			45
Operating power	Max.	W			5
Operating Temperature		°C			-40 to +85
Storage Temperature		°C			-50 to +85
Package Type		mm	S12		Ø4x70 for bare fiber

* Test at central wavelength only.

Ordering Information

S	B	S			0	0							
Wavelength 4=1550nm 5=1480nm 7=1310nm P=2000nm S=Specify			Structure 7=1x7		Splitting Ratio 00= Even		Grade P=Premium A=A grade		Package B=S12	Fiber Type 1=SMF-28e	Pigtail S=250um bare fiber	Fiber Length 0=0.5m 1=0.75m 2=1.0m S=Specify	Connector 0=None

Note: 1. Central Wavelength can be customized for different applications.
2. All specifications are before connectors and are subject to change without notice.