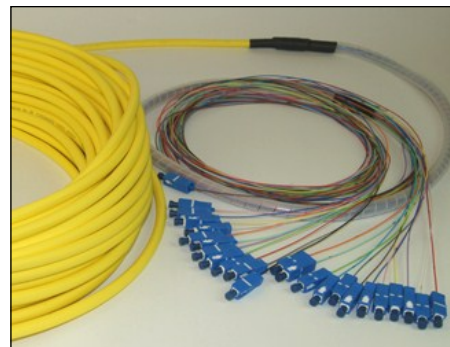


## Pre-terminated cable for panel installation - SM

- Single mode pre-terminated cable prepared for simple and fast installation in FOSS FP70 and FP80 panels.
- May be delivered with most connector types.
- PC- or APC-polished connectors.
- 4-, 8-, 12- or 24-fibre cable with tight buffer.
- Delivered in customer specified lengths.



### Description

The pre-terminated cable is delivered with connectors at one or both sides. The cable is prepared for installation in FOSS FP70 and FP80 panel\* - 1 m of the fibre is protected by a spiral cable wrap and may therefore be placed under the drawer. This simplifies maintenance because it enables you to take the drawer out of the panel (without loosening the fibres from their guides).

As an option the connector sides of the cable may be protected with a flexible tube. This is often used if this side needs to be pulled for a long distance. Outside this tube an optional cable pulling grip may be placed if the cable shall be pulled through tubes.

*\* cable for FP60 may be delivered on request*

### Specifications

Cable type:	Tight buffer, AXAI, yellow Tight buffer, AXXI, black	Flame retardant, Zero halogen Flame retardant, Zero halogen
Diameter cable:	5/6/6.5/8 mm 9.6/9.6/9.9/10.8 mm	4/8/12/24-fibre AXAI 4/8/12/24-fibre AXXI
Tension strength cable:	440/680/900/1400 N 800 N	4/8/12/24-fibre AXAI AXXI
Diameter w/cable grip:	34 mm 40 mm	4-fibre 8/12/24-fibre
Tension strength cable grip:	350 N	
Fibre type:	ITU-T G.657.A1 OS-2	Compatible with G.652.D EN 50173-1
Insertion loss connectors:	< 0.5 dB @ 1310/1550 nm	< 0.15 dB typical
Return loss connectors:	< -45 dB @ 1310/1550 nm for PC < -60 dB @ 1310/1550 nm for APC	< -50 dB typical < -65 dB typical
Classification, connectors:	Class C2 (PC), class C1 (APC)	IEC 61755-1
Operating temperature:	-40°C to 60°C	

## Article numbers

### Pre-terminated cable - connectors at one side

x-692120-0-yyy	4-fibre AXAI, SM, x, y m
x-692140-0-yyy	8-fibre AXAI, SM, x, y m
x-692150-0-yyy	12-fibre AXAI, SM, x, y m
x-692180-0-yyy	24-fibre AXAI, SM, x, y m
x-695720-0-yyy	4-fibre AXXI, SM, x, y m
x-695740-0-yyy	8-fibre AXXI, SM, x, y m
x-695750-0-yyy	12-fibre AXXI, SM, x, y m
x-695780-0-yyy	24-fibre AXXI, SM, x, y m

### Pre-terminated cable - connectors at both sides

x-692120-x-yyy	4-fibre AXAI, SM, x-x, y m
x-692140-x-yyy	8-fibre AXAI, SM, x-x, y m
x-692150-x-yyy	12-fibre AXAI, SM, x-x, y m
x-692180-x-yyy	24-fibre AXAI, SM, x-x, y m
x-695720-x-yyy	4-fibre AXXI, SM, x-x, y m
x-695740-x-yyy	8-fibre AXXI, SM, x-x, y m
x-695750-x-yyy	12-fibre AXXI, SM, x-x, y m
x-695780-x-yyy	24-fibre AXXI, SM, x-x, y m

x = connector type:

0 = No connector

7 = SC/PC

E = SC/APC

5 = FC/PC

D = FC/APCR

H = FC/APCN

L = LC/PC

K = LC/APC

M = MU/PC

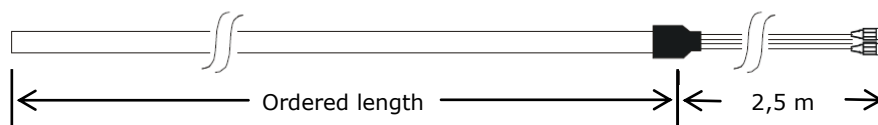
F = E2000/PC

G = E2000/APC

yyy = length code:

010 = 10 m, 015 = 15 m, 100 = 100 m etc.

Other cable types may be delivered on request.



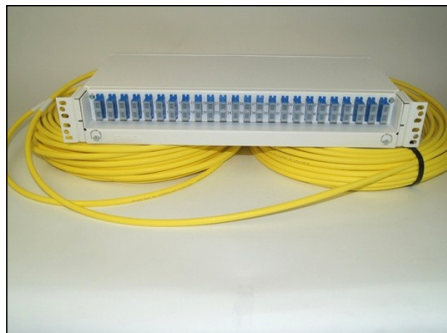
## Accessories

990140	Protection cable-end, w/cable grip
990141	Protection cable-end, without/cable grip

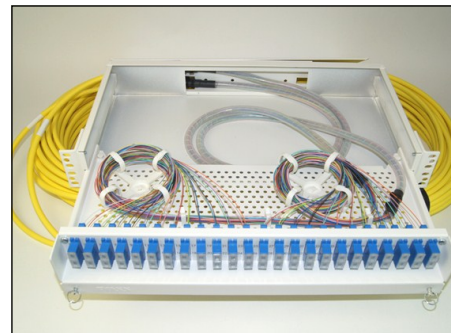
## Gallery



*Pre-terminated cable*



*Pre-terminated cable in FP70 panel*



*Pre-terminated cable in FP70 panel  
- with drawer open*



*Pre-terminated cable with protection cable-end  
w/cable grip*