
コントローラ

Controller

Ver.2.4

February 28, 2014

Seikoh Giken Co., Ltd.

1.適用 Scope

本仕様書はコントローラに適用する。

This specification applies to Controller.

2.型名 Product code

Table 1

Product code	Remarks
C3-0355	Frequency range : 0.1 to 3,000MHz
C3-1055	Frequency range : 0.1 to 10,000MHz

3.付属品 Accessories

Table 2

Item	Quantity	Remark
AC power cable	1	For controller (L=2.5m)
Rack mounting bracket	1	—

4.環境条件 Standard operating conditions

Table 3

Item	Specification				Remarks
	Min.	Typ.	Max.	Unit	
Operating temperature range	0		40	°C	—
Operating humidity range	45		90	%RH	—
Storage temperature range	-20		60	°C	—
SET-up location	Indoor use only				—
Warm up time	Over 1hr				—

Note : Refrain from dew condensation

5. 定格 Rating

Table 4

Item	Specification				Remark	
	Min.	Typ.	Max.	Unit		
◆Part of light source						
Output port	3 ports					
Port select	Automatic				GP-IB control	
	Manual				Panel switch	
Opt. alarm(Output level)	Rating < -3dB				Normal : Green(LED) Abnormal : Red(LED)	
◆Part of O/E						
Frequency range	C3-0355	0.1		3,000	MHz	—
	C3-1055	0.1		10,000		
Output impedance	50			Ω	—	
Wavelength	1530		1570	nm	—	
Optical input level			2	dBm	—	
Responsivity	0.65	0.80		A/W	—	
Opt. alarm(Input level)		-14		dBm	Normal : Green(LED) Abnormal : Red(LED)	
◆Others						
Laser safety	Automatic LD shut down				The "Opt Alarm" indicator illuminates green during normal operating conditions. If the system detects a bad fiber connection, the Optical Alarm will display as red and the laser source will shut down until the connection is properly made or the connector is properly cleaned.	
Input AC voltage	90		250	V	100W max	
Weight			10	kg	—	
RF output connector	N/J				—	
Optical I/O connector	SC/APC				—	
External joining terminal	GP-IB				—	
Optical monitor terminal	BNC/J				—	
AC Power connector	AC inlet				—	

6.性能 Performance

Table 5

Item	Specification				Remark
	Min.	Typ.	Max.	Unit	
Optical output level	12		14	dBm	—
Wavelength	1545		1555	nm	—
Output return loss	14			dB	—
Gain (Output/Input)	8			dB	Combination evaluation with the standard machine. (EA-00001) Optical input level:0dBm Modulation factor:35%
Gain deviation			10	dBp-p	

7.外観図 External

付図:SOEFS-E002-02による。

The probe head is shown in Fig.SOEFS-E002-02.

8.検査 Inspection

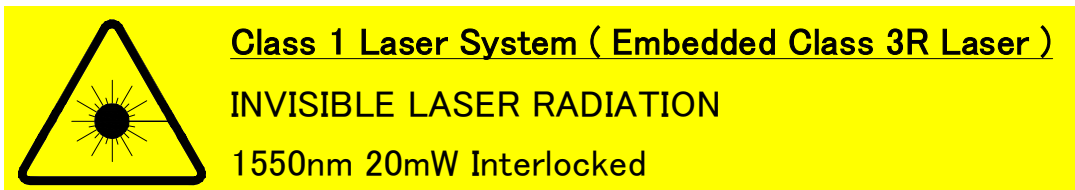
別途打ち合わせによる。

To be discussed.

9.セーフティーインフォメーション Safety information

本製品は不可視レーザー光を使用しておりますので、誤ってレーザー光を目に入れますと失明する危険性があります。直接レーザー光を見ないようにして下さい。

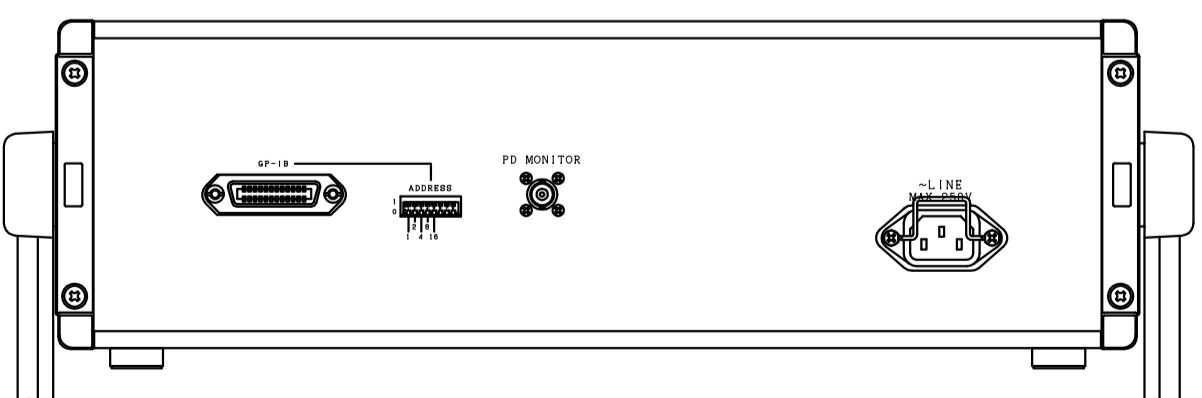
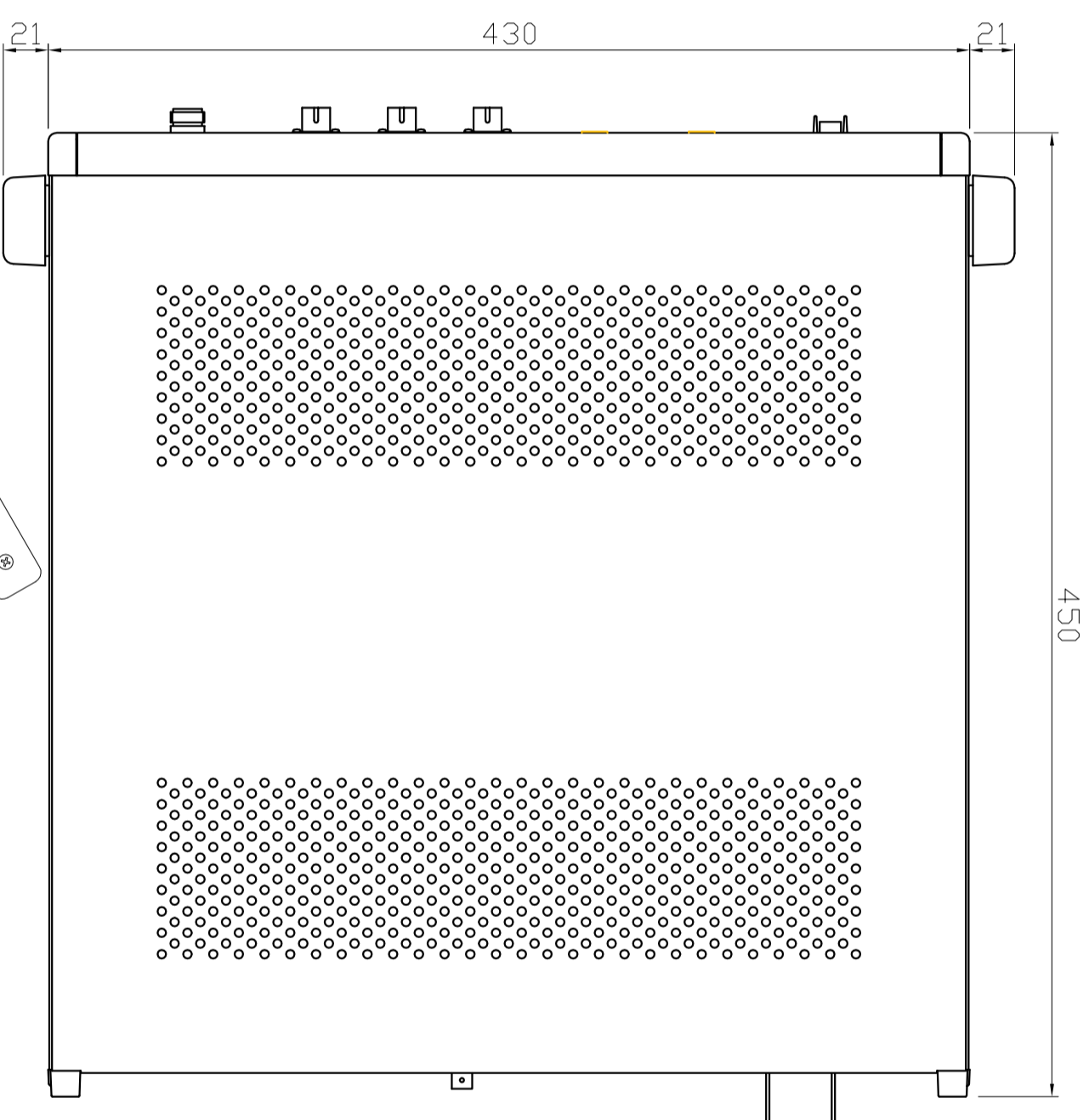
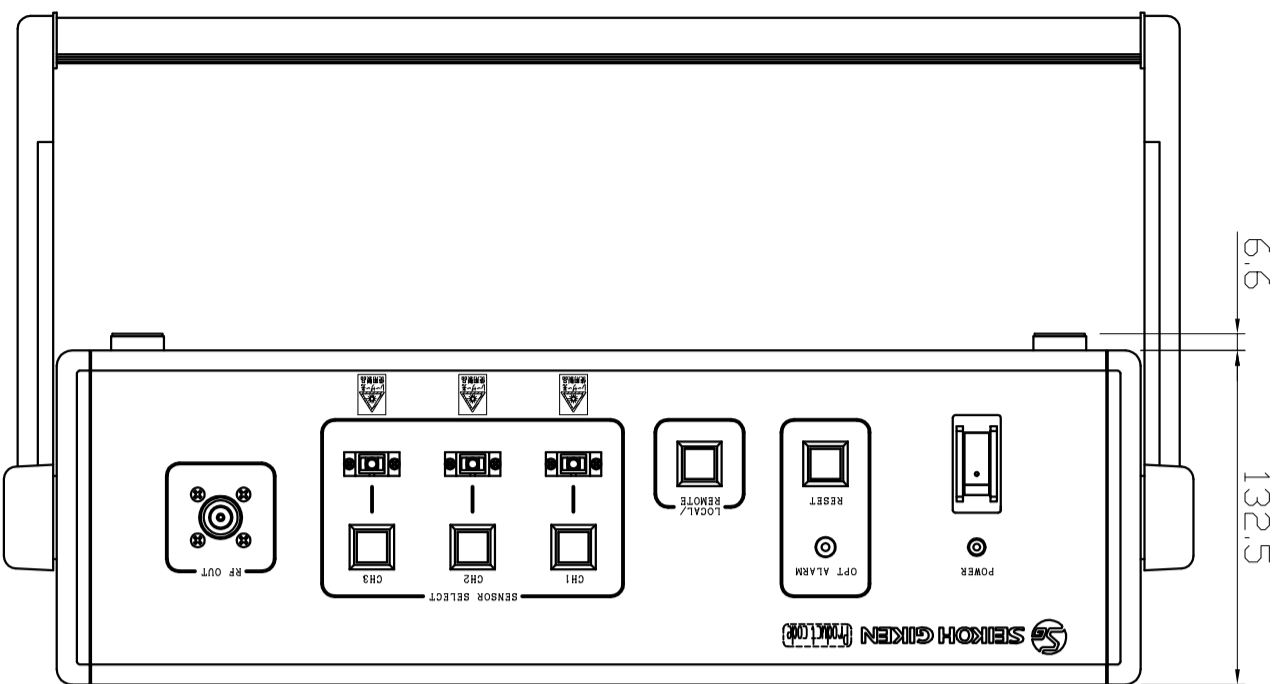
This product uses a laser light that is not visible to the human eye, but can cause serious injuries or permanent loss of vision. Please exercise proper caution and do not look directly into the laser light as it may cause blindness.



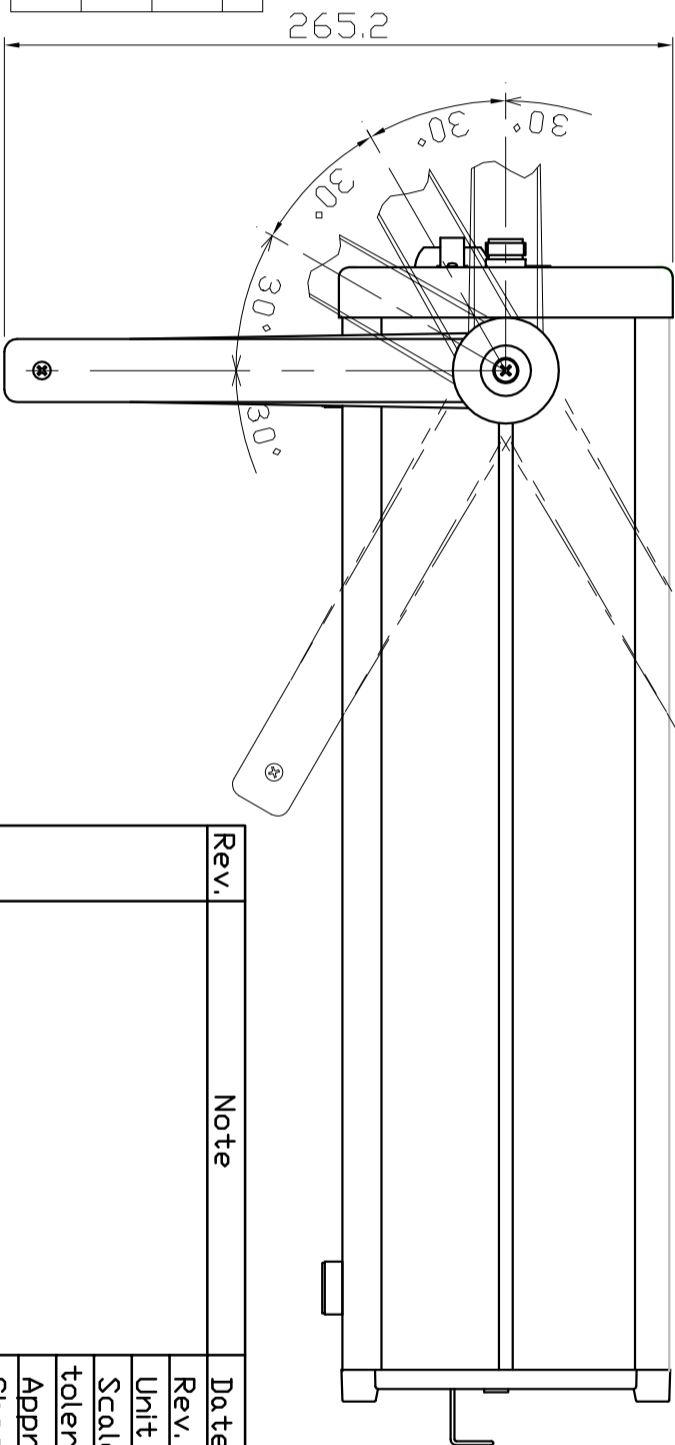
10.保証 Warranty

本製品に関し、構成部品の故障や製造上の欠陥に対して納入日から1年間無償修理保証致します。但し、本保証は製品の正常な使用において発生した故障のみに適用致します。

SEIKOH GIKEN warrants the Controllers against defects in parts and workmanship for one full year from B/L date. This warranty shall be invalid by any abuse, misuse, misapplication or improper installation.



Painted color	letter color
Panel (SG2101)	Black
Frame (Munsell color:2, 5Y7/11)	
Cover (Munsell color:N8)	



Rev.	Note	Date	11.06.17
Rev.		Rev.	1.0
Unit		Unit	mm
Scale		Scale	1/3
tolerance		tolerance	±3
Approved		Approved	Y.Toba
Checked		Checked	M.Dhizawa
Drawn		Drawn	K.Fujinami

Controller
External

SDEFS-E002-02

